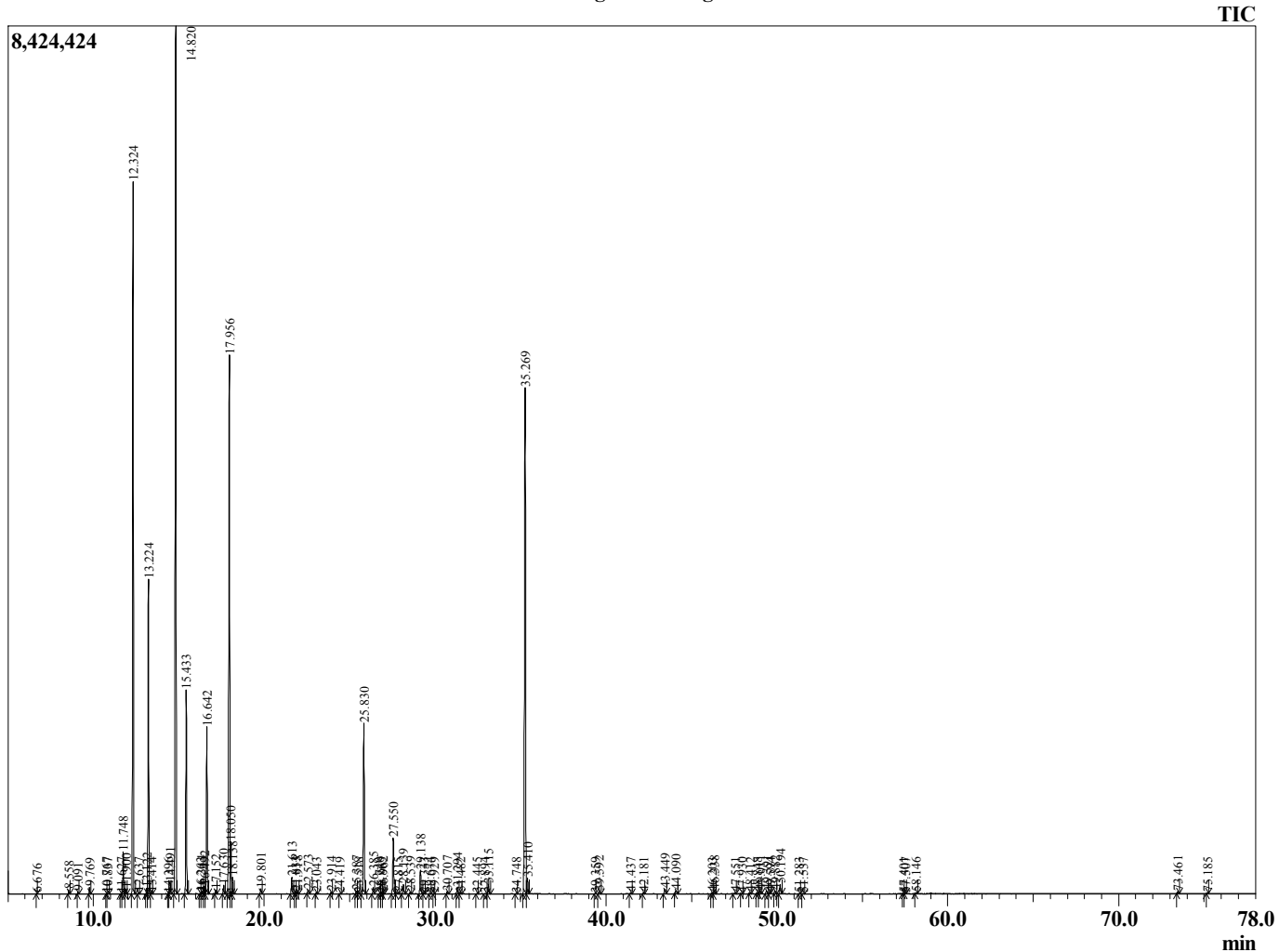


Sample Information

Sample Type : Essential Oil
 Sample Name : Picea glauca
 Injection Volume : 0.10
 Spruce White
 Lot# CAK01-KW
 Country: Canada



Chromatogram Picea glauca



R.Time	Name	Area%
6.676	Hexanal	0.01
8.558	Hex-3(Z)-enol	0.08
9.091	n-Hexanol	0.03
9.769	Santene	0.14
10.767	Unidentified	0.01
10.837	Bornylene	0.02
11.627	Hashishene	0.02
11.748	Tricyclene	0.90
11.900	alpha-Thujene	0.11
12.324	alpha-Pinene	16.09
12.637	beta-Fenchene	0.02
13.122	alpha-Fenchene	0.13
13.224	Camphene	7.05
13.414	Thuja-2,4(10)diene	0.02
14.396	Cymene isomer	0.02
14.491	Sabinene	0.26
14.820	beta-Pinene	21.98
15.433	Myrcene	4.87
16.263	Octanal	0.02
16.344	Pseudolimonene	0.06
16.492	alpha-Phellandrene	0.20
16.642	delta-3-Carene	4.08
17.152	alpha-Terpinene	0.11
17.630	para-Cymene	0.23
17.956	Limonene	14.11
18.050	beta-Phellandrene	1.18
18.138	1,8-Cineole	0.39
19.801	gamma-Terpinene	0.14
21.613	Terpinolene	0.44
21.833	Fenchone	0.04
21.918	para-Cymenene	0.07
22.573	Linalool	0.11
23.043	alpha-Thujone	0.03
23.914	alpha-Fenchol	0.05
24.419	alpha-Campholenal	0.02
25.387	trans-Pinocarveol	0.09
25.518	Unidentified	0.01
25.830	Camphor	4.93
26.385	trans-beta-Terpineol	0.19
26.740	trans-Pinocamphone	0.02
26.865	Unidentified	0.02
26.962	Isoborneol	0.05
27.550	Borneol	1.61
27.815	cis-Pinocamphone	0.03
28.139	Terpinen-4-ol	0.28
28.539	para-Cymen-8-ol	0.04
29.138	alpha-Terpineol	0.72
29.333	Estragole	0.02
29.674	Unidentified	0.01
29.929	Verbenone	0.02
30.707	alpha-Fenchyl acetate	0.07
31.294	Citronellol	0.16
31.482	Thymol methyl ether	0.04
32.445	Carvone	0.01
32.894	Geraniol	0.02
33.115	Piperitone	0.27

R.Time	Name	Area%
34.748	Unidentified	0.01
35.269	Bornyl acetate	16.53
35.410	Isobornyl acetate	0.44
39.359	alpha-Terpinyl acetate	0.01
39.592	Unidentified	0.07
41.437	Geranyl acetate	0.03
42.181	beta-Elemene	0.03
43.449	Junipene	0.15
44.090	beta-Caryophyllene	0.12
46.203	trans-beta-Farnesene	0.03
46.338	alpha-Humulene	0.10
47.551	trans-Cadina-1(6),4-diene	0.04
47.930	Germacrene D	0.01
48.412	beta-Selinene	0.02
48.848	alpha-Selinene	0.02
49.011	alpha-Murolene	0.07
49.391	(E,E)-alpha-Farnesene	0.09
49.594	beta-Bisabolene	0.02
49.882	gamma-Cadinene	0.09
50.194	delta-Cadinene	0.29
51.283	alpha-Cadinene	0.02
51.537	trans-alpha-Bisabolene	0.02
57.401	Unidentified	0.01
57.507	epi-alpha-Cadinol	0.01
58.146	alpha-Cadinol	0.03
73.461	beta-Springene	0.05
75.185	alpha-Springene	0.02
		100.00